

DRAFT

Taylor
Duignan
Barry

CORPORATE FINANCE & ECONOMICS EXPERTISE

P.O. Box 2500
Wellington
New Zealand

4 June 2006

Sir Geoffrey Palmer, Law Commission
Warren Young, Law Commission
Wayne Goodall, Effective Interventions Unit, MoJ
Chris Hurd, MoJ

Variations in District Court Sentencing: Regional Analysis

Introduction

This report summarises the results of our analysis of the degree of variation in prison sentencing across District Court regions for different offences.

The data on prison sentencing by the District Courts has been analysed across 17 administrative regions for 65 different offence types and for 12 different offence sub-categories. The variation in sentencing has been analysed in terms of the % sent to prison for a given offence type and, for those sent to prison, the nominal term of imprisonment. The full data and analysis is available in the spreadsheets that accompany this report.

Regional Analysis of Rates of imprisonment

Regional Rates of Imprisonment by Offence Type

The Ministry of Justice (MoJ) have been very helpful in providing, at short notice, data on the nominal sentences imposed for different offences in 2004 and 2005 across the District Courts at a regional level in New Zealand. The data provided by the MoJ is sourced from the Ministry's "justice data warehouse", which in turn is sourced from the Case Management System database.¹

The data has been analysed in terms of the extent to which a prison sentence or non-prison sentence was imposed for convictions for each of 65 offences types (and 12 offence sub-categories) in each of the 17 District Court regions in New Zealand during the period under review.

¹ We are not in a position to vouch for the accuracy of the original data.

DRAFT

The 17 District Court regions considered in the analysis and the number of convictions recorded at each District Court for the two years 2004 and 2005 are provided in Appendix One of this report.

Appendix Two provides, in summary table form, the percentages of convictions where imprisonment was imposed for each of the 65 offence types for each of the 17 regions.

Appendix Three provides, in summary table form, the percentages of convictions where imprisonment was imposed for each of the 12 offence sub-categories for each of the 17 regions.

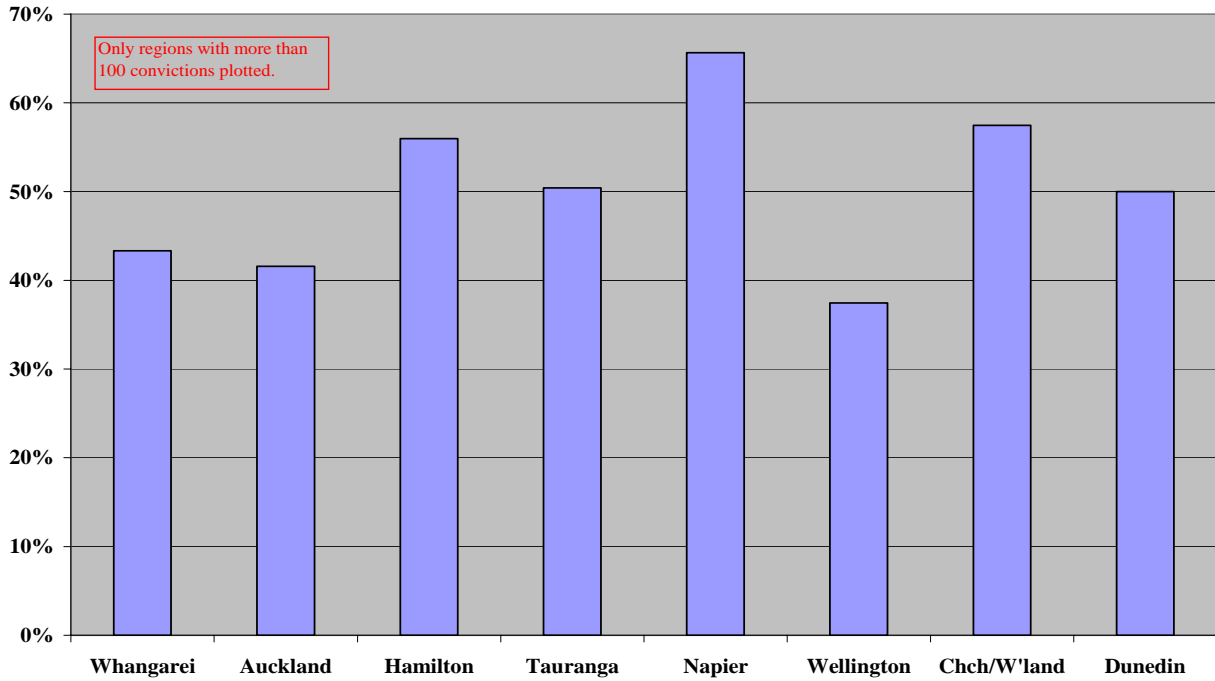
The graphs below illustrate, for five sample offence types, the regional variations in sentencing, measured in terms of the percentage of convictions for which a prison sentence was imposed. The offence types illustrated below are:

- “grievous assault”;
- “theft”;
- “conversion”;
- “breach of community work”; and
- “driving under the influence”.

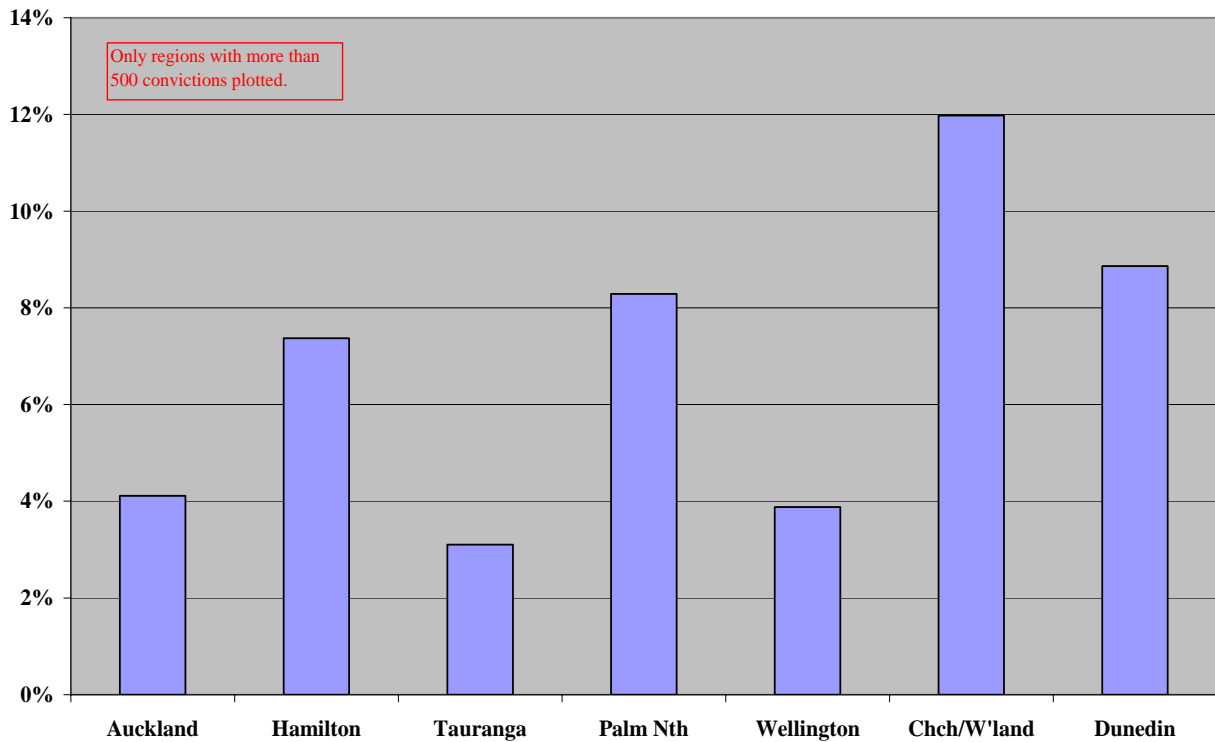
Each of the five offence types presented below had well over 1,000 convictions across the country during the two years under review. Only those regions with more than 500 convictions (for theft, breach of community work, and driving under the influence) or more than 100 convictions (for grievous assault and conversion) are included in the graphs below.

DRAFT

% Imprisoned - Grievous Assault

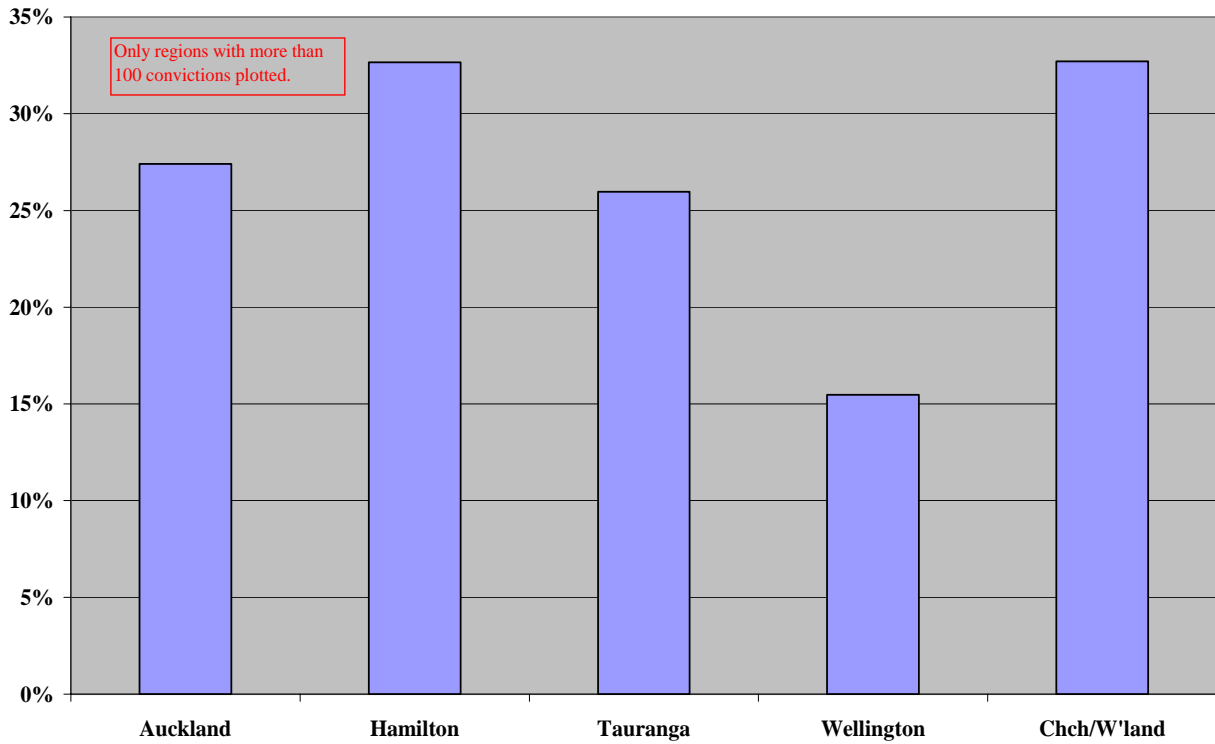


% Imprisoned - Theft

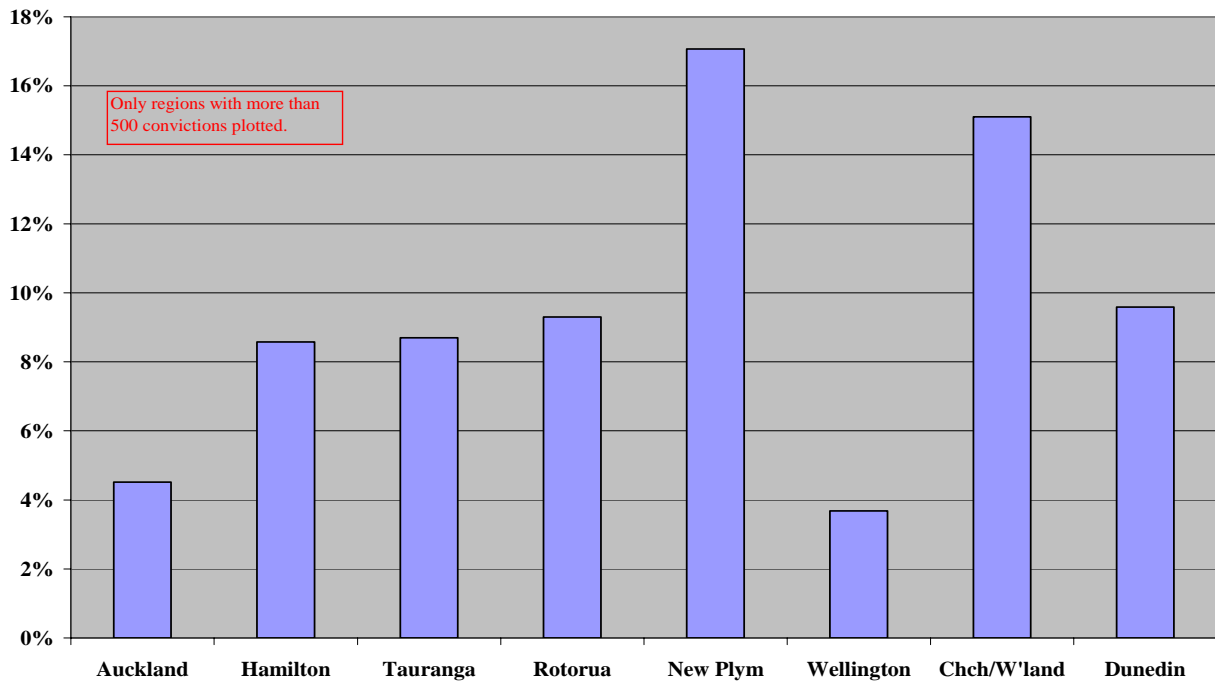


DRAFT

% Imprisoned - Conversion

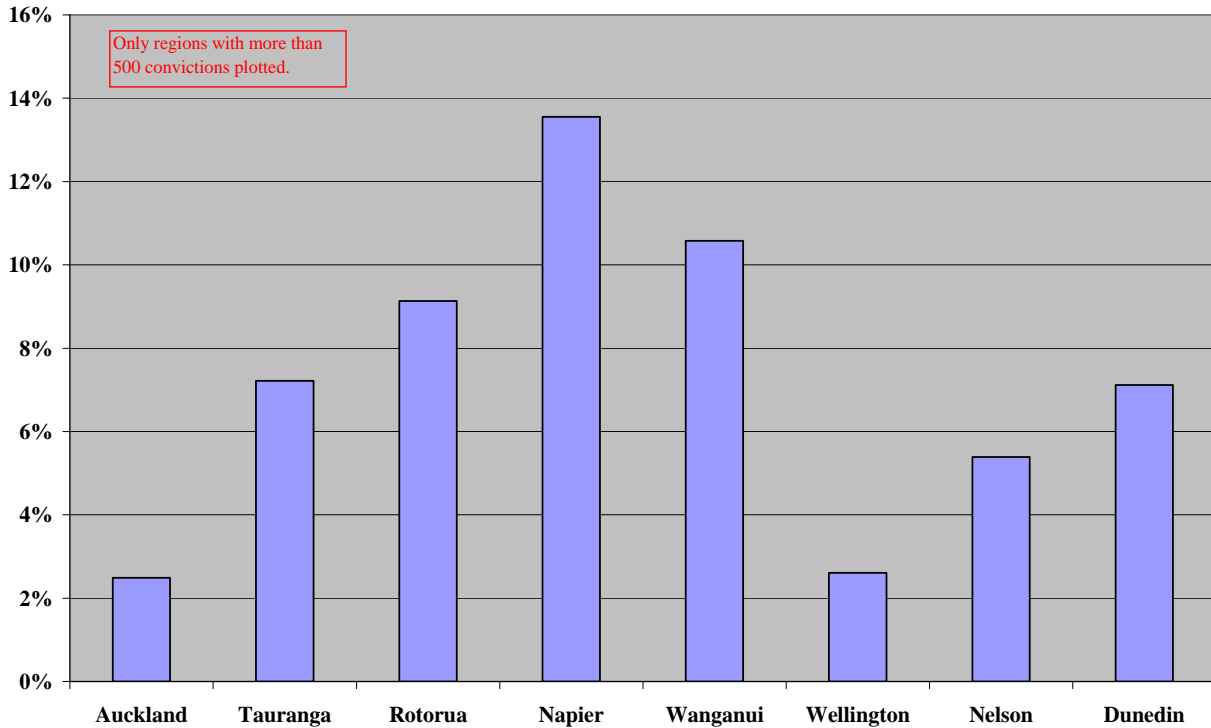


% Imprisoned - Breach of Community Work



DRAFT

% Imprisoned -Driving Under Influence



When interpreting the above data it should be noted that:

- the data presented above and in Appendix 2 do not permit allowance to be made for the effect of the number of previous offences of the offender on the term of the prison sentence. However, given the large numbers of convictions considered for the offence types presented above (with over 100 to over 500 convictions recorded in each region), it may not be unreasonable to assume that the numbers of previous offences would not be markedly dissimilar across the regions;
- the breadth of the classes used when categorising the different offences may affect the degree of variability of the sentencing terms recorded across the regions. If, for example, offences of a given type are consistently more serious in a particular region or regions, the average sentence imposed in the region would be expected to be more severe. However, the large numbers of convictions for the regions and offences presented above may also lead to differences in the severity of the offence across the regions tending to wash out;
- examining the data at the regional level (i.e., the 17 regions) will tend to understate the degree of variability in sentencing at the individual District Court level;

DRAFT

- there may be differences in classifications across the regions that distort the data. For example, an offence that is classified as a serious assault in one region may be classified as a minor or a grievous assault in other regions;
- in cases of multiple offences, the most serious offence for each case has been used; and
- the 2005 data is provisional and sentences may be subject to appeal.

Regional Rates of Imprisonment by Sub-category of Offence

To allow, at least in part, for the possible distortions to the data from systematic differences in the number of previous convictions and/or the degree of seriousness of the offences across the regions, the regional variations in sentencing for 12 “sub-categories” of offence were also analysed.

The 12 sub-categories of offence considered are provided in Appendix Three. The sub-categories covered four different offence types:

- “driving under the influence”;
- “driving while disqualified”
- “receiving”; and
- “theft”.

In the case of “driving under the influence” and “driving while disqualified”, the sub-categories permit some allowance to be made for the number of previous offences of the offender, with sentencing data recorded separately for those who have recorded three or more previous offences.

In the case of “receiving” and “theft”, the sub-categories permit some allowance to be made for the severity of the offence, with sentencing data recorded separately for three different categories according to the value of the property involved (e.g. less than \$500, greater than \$500).

The graphs below illustrate the regional variations in sentencing, measured in terms of the percentage of convictions for which a prison sentence was imposed, for three sample sub-categories of offences. Each of these three offence sub-categories had over 900 convictions recorded across the country during the period under review. Only regions with 100 or more convictions are included in the graphs.

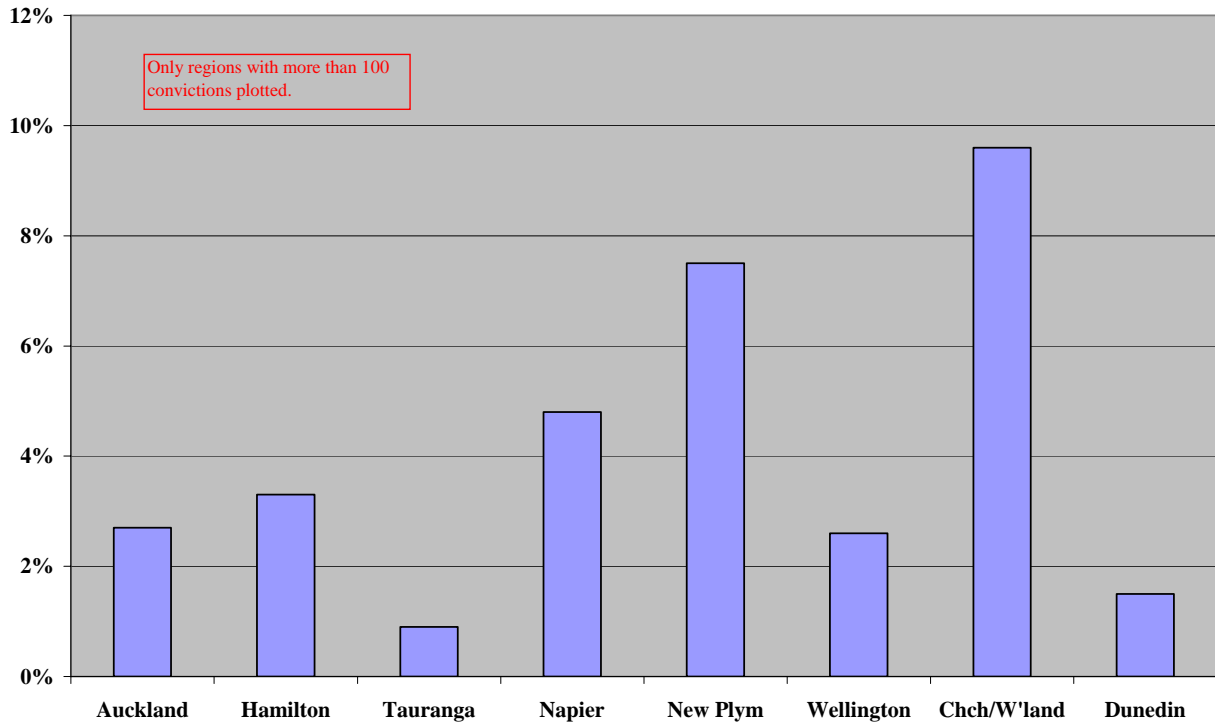
The offence types illustrated below are:

- theft of property (with a value of less than \$500);
- driving with excess breath alcohol (3rd or subsequent offence); and

DRAFT

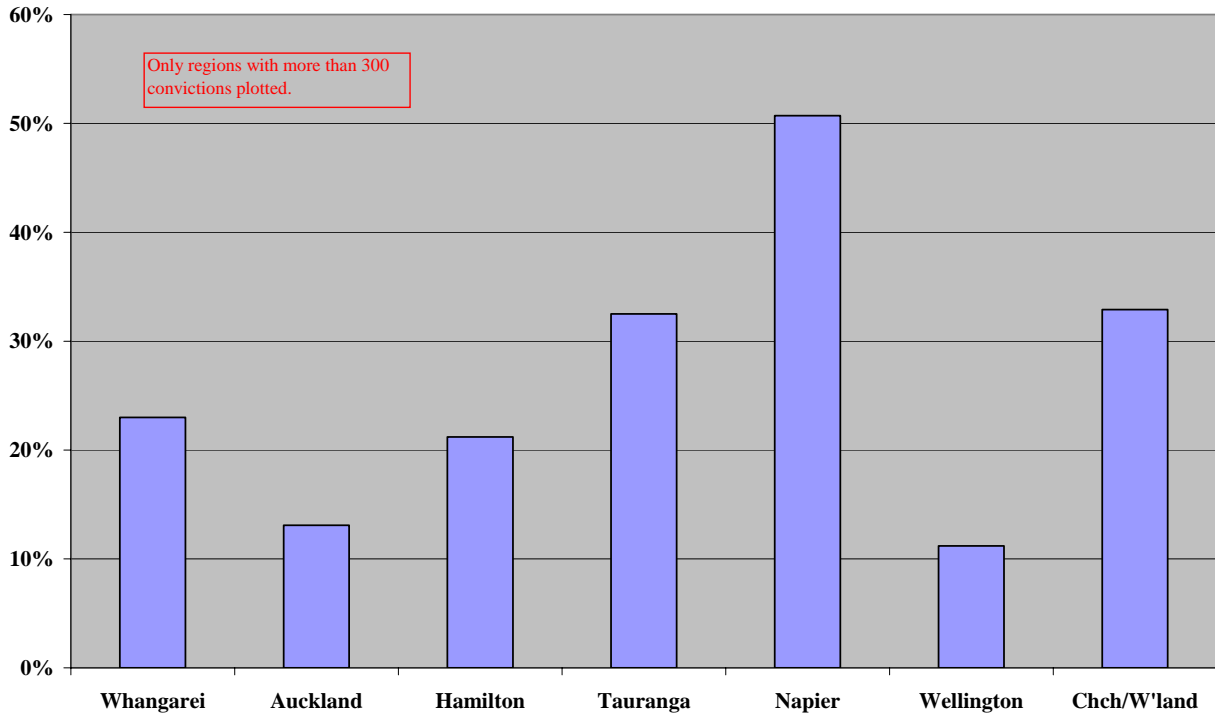
- driving while disqualified (3rd or subsequent offence);

% IMPRISONED - THEFT PROPERTY (UNDER \$500)

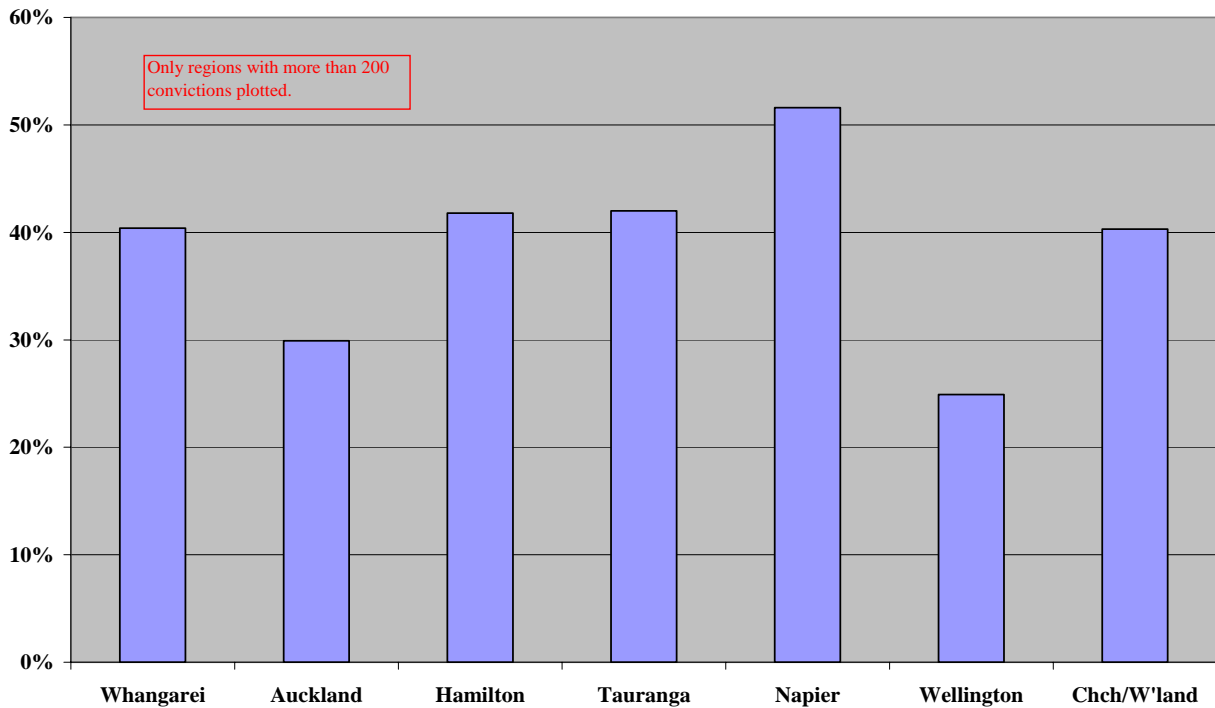


DRAFT

% IMPRISONED - EXCESS BREATH ALCOHOL (3rd or Sub)



% IMPRISONED - DRIVING WHILE DISQUAL. (3rd or Sub)



DRAFT

Regional Analysis of Nominal Term of Imprisonment

Finally we examine, for those cases where imprisonment is imposed, the degree of variation in the nominal prison sentence imposed across the different District Court regions.

The graphs below present the results of the analysis for the five offence types and three offence sub-categories presented above. For ease of reference, we include both the percent imprisoned and the term of the sentence on a single graph.

The graphs present the median prison sentence (measured in days) for each region for the selected offence types.² The accompanying spreadsheets include the mean, standard deviation and range (maximum and minimum) of the nominal prison sentences for each region for each category of offence.

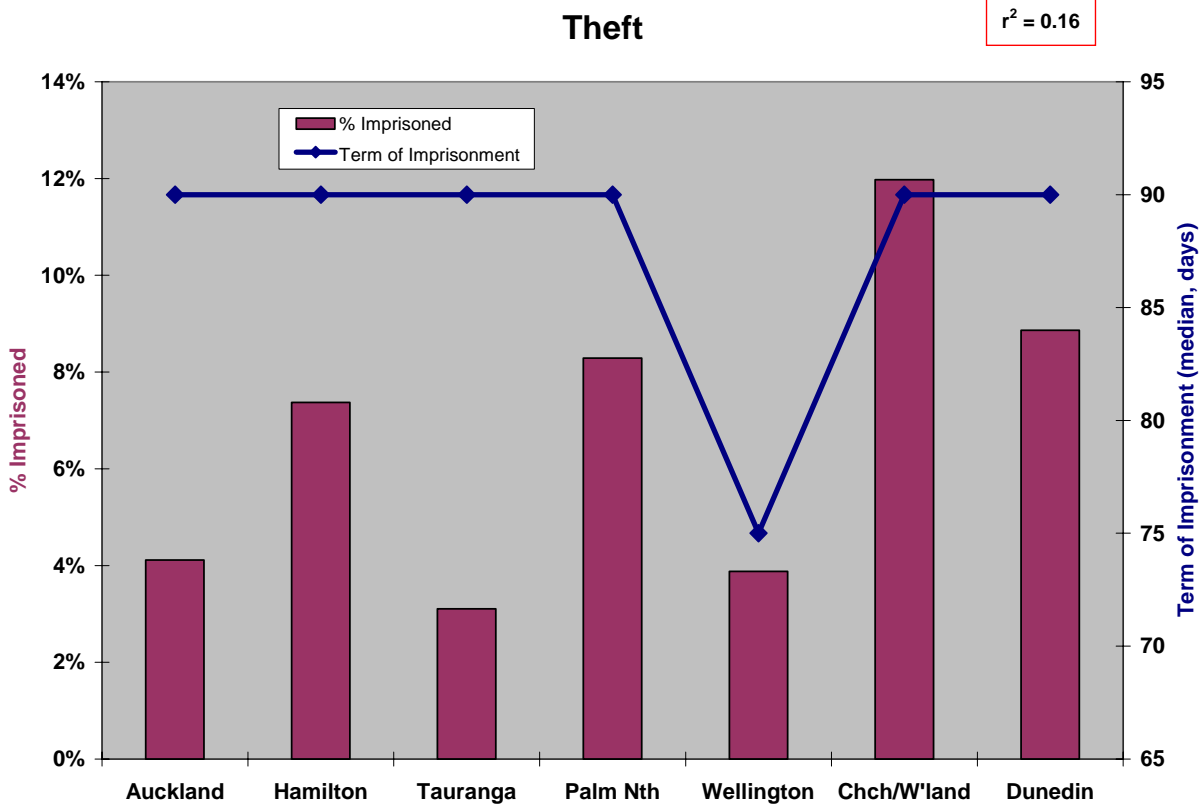
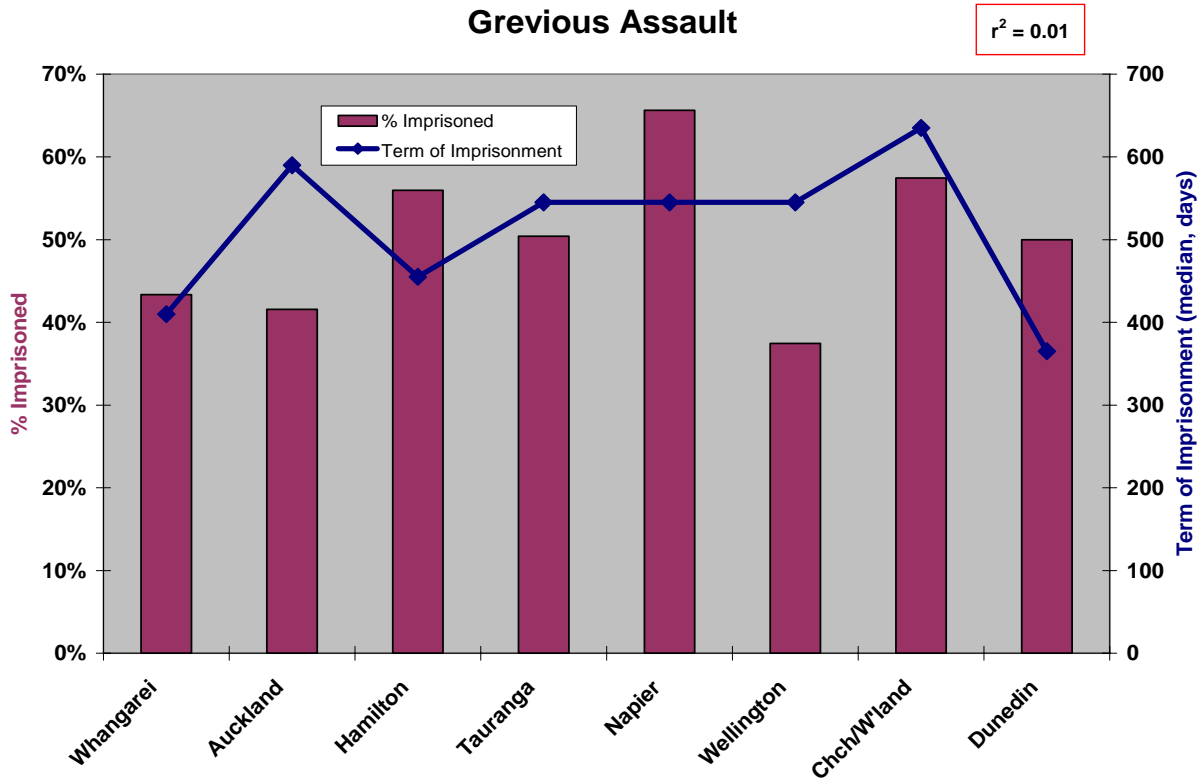
When interpreting the graphs and data it should be noted that:

- the number of cases where imprisonment is imposed for some of the regions is relatively small (as the number of convictions and/or imprisonment rates are low);
- for two of the eight offence categories considered (“driving under the influence” and “theft of property (under \$500)”), there appears to be some evidence of a negative correlation between the imprisonment rates and length of the prison sentences: i.e., that regions which have had relatively high imprisonment rates have tended to set somewhat shorter prison sentences;³
- for the other six offence categories, there is little or no sign of a relationship between the imprisonment rate and the length of the prison sentence imposed;
- the number of observations on which the correlations (the “r squareds”) are estimated is small. Further, the number of offence categories considered is small and may not be representative of all offence categories. A full analysis, including regression analysis, may yield further insights.

² The median is probably a better indicator than the mean of the “average” sentence term. The data sets are not normally distributed but generally tend to be positively skewed (i.e. with long tails to the right). That is, the majority of the sentences are relatively short, but there are a number of sentences which are long (relative to the mean sentence). Some of the distributions are relatively flat-topped (“platykurtic”).

³ We present on the graphs the “r squared” (the Pearson product moment correlation coefficient) for each data series. An “r squared” is an indicator of the degree to which the variance in one series (imprisonment rates) is associated with the variance in another series (the term of the sentence). An “r squared” can range from 0 to 1, with a number closer to 1 indicating a relatively high correlation (note that the correlation may be positive or negative). For two of the offence categories (“driving under the influence” and “theft of property (under \$500)”), the reported “r squareds” are above 0.6 but for the other offence categories the “r squareds” are low, indicating little correlation (either positive or negative) between imprisonment rates and the term of the sentence.

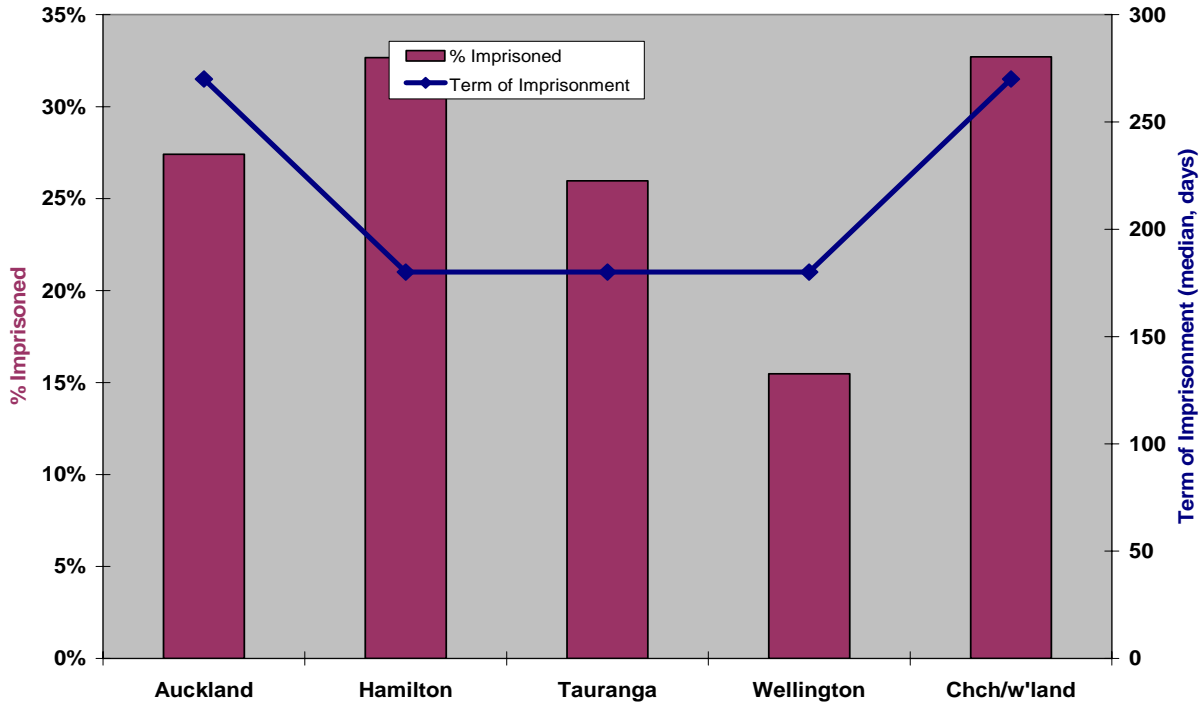
DRAFT



DRAFT

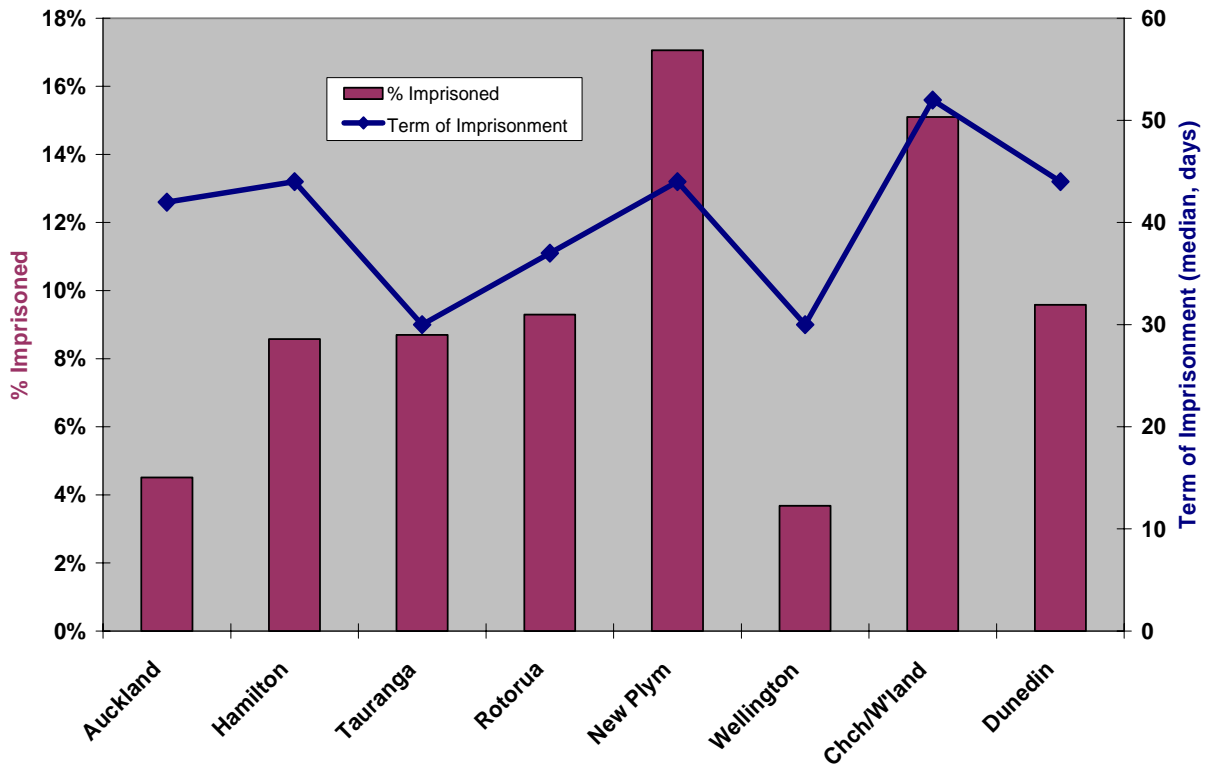
Conversion

$r^2 = 0.17$



Breach of Community Work

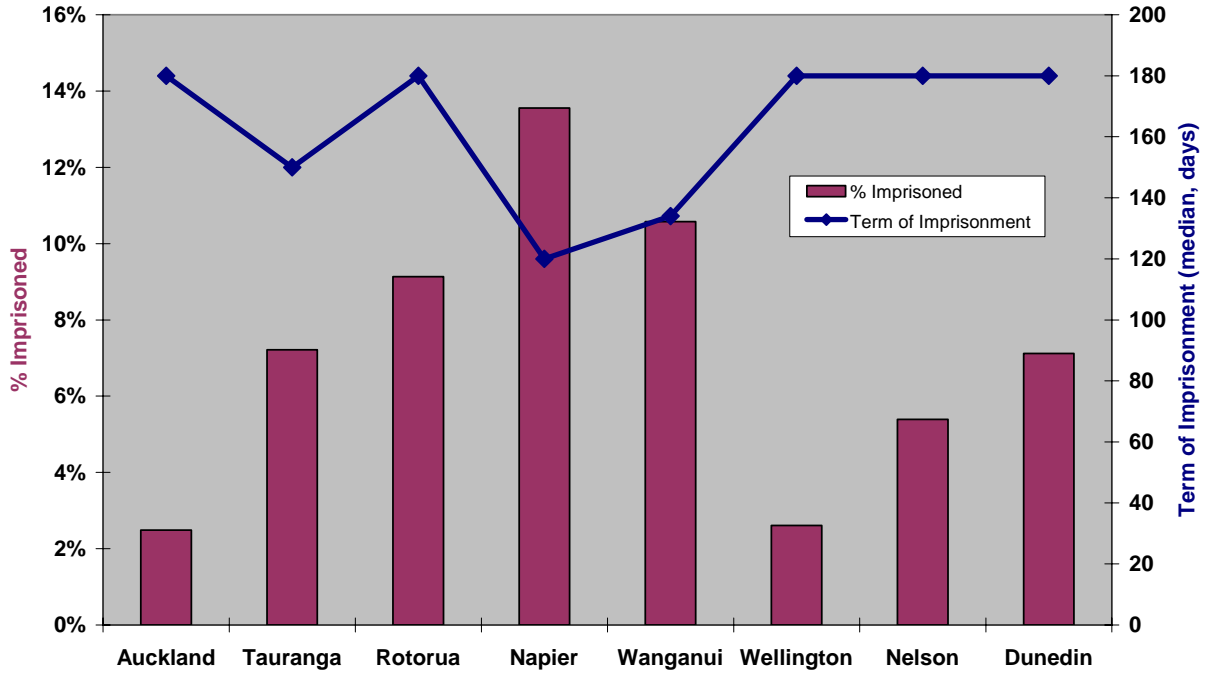
$r^2 = 0.38$



DRAFT

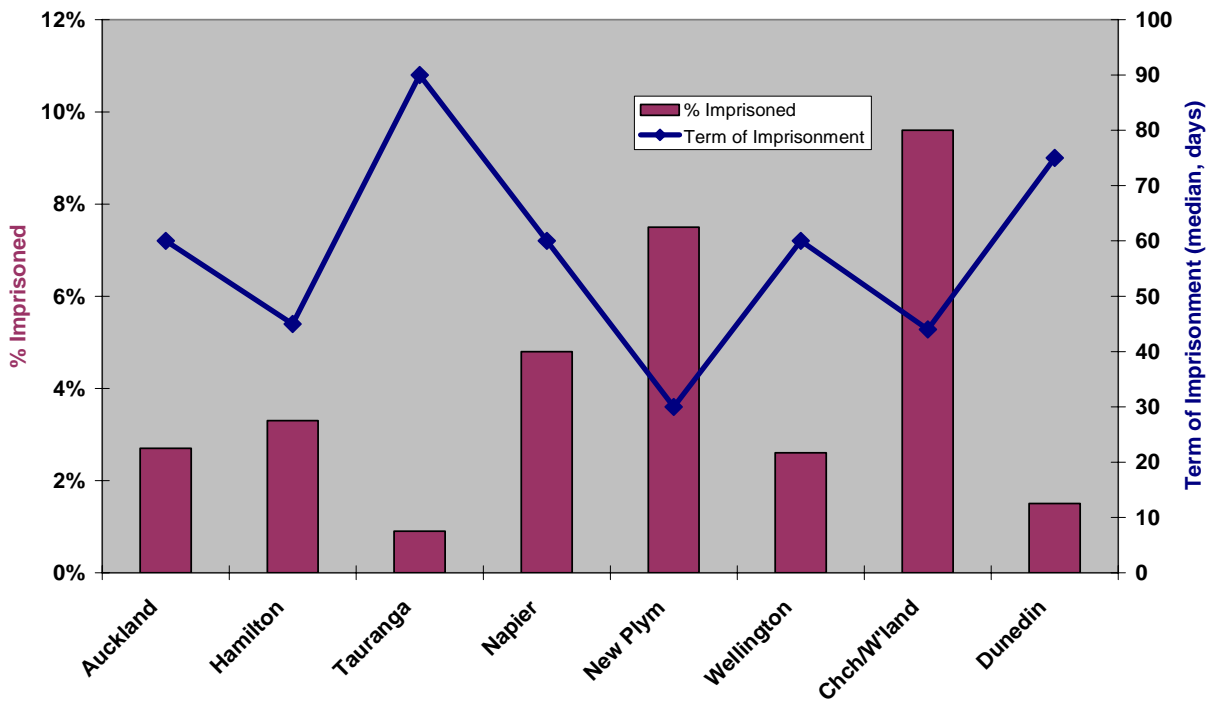
Driving Under Influence

$r^2 = 0.64$



Theft Property (Under \$500)

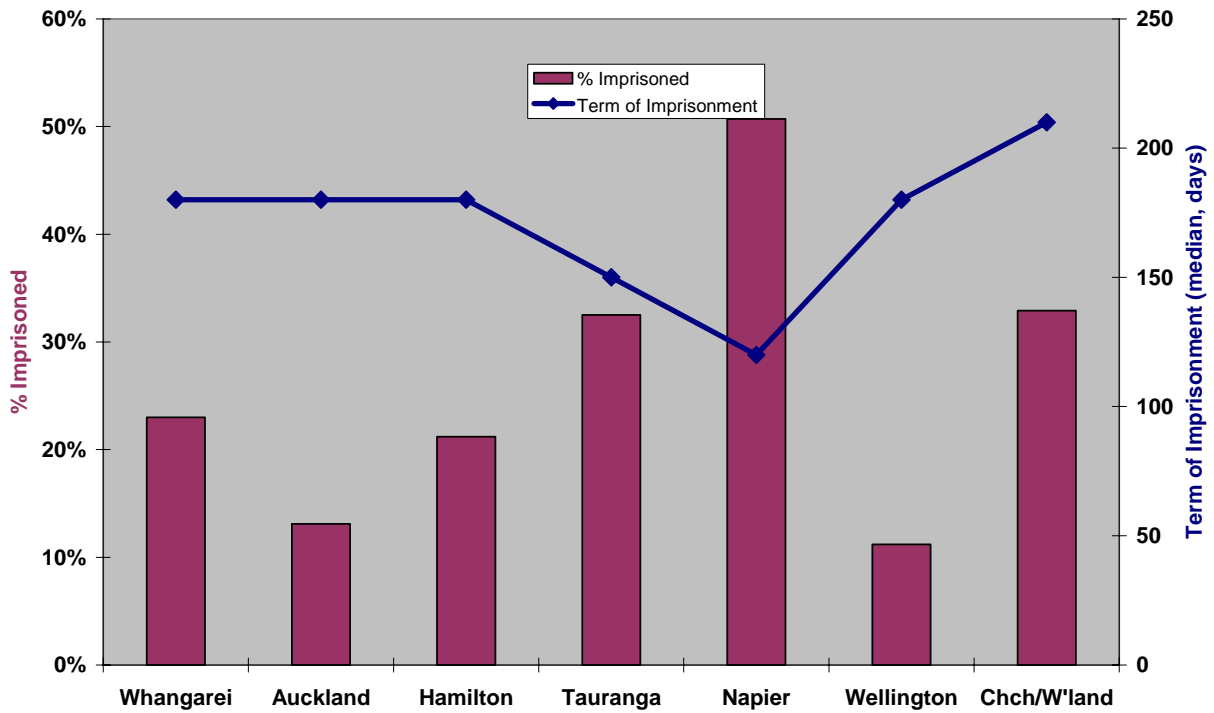
$r^2 = 0.62$



DRAFT

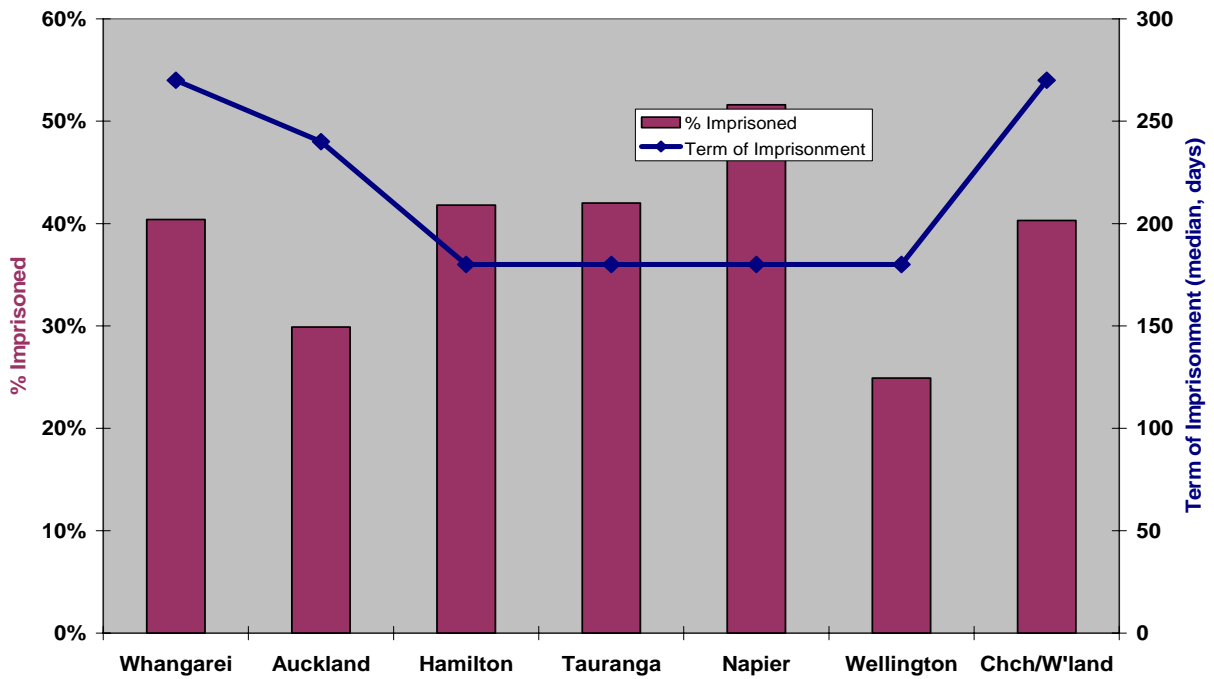
Excess Breath Alcohol (3rd or Sub)

$r^2 = 0.38$



Driving While Disqual. (3rd or Sub.)

$r^2 = 0.01$



DRAFT

Appendix 1: District Court Regions

Region	District Court	Cases (2004, 05) Convicted
01:WHANGAREI	DARGAVILLE DC	701
01:WHANGAREI	KAIKOHE DC	3,020
01:WHANGAREI	KAITAIA DC	1,571
01:WHANGAREI	WHANGAREI DC	5,287
02:AUCKLAND	AUCKLAND DC	23,667
02:AUCKLAND	MANUKAU DC	17,344
02:AUCKLAND	NORTH SHORE DC	8,198
02:AUCKLAND	PAPAKURA DC	3,195
02:AUCKLAND	PUKEKOHE DC	2,111
02:AUCKLAND	THAMES DC	1,367
02:AUCKLAND	WAITAKERE DC	10,666
02:AUCKLAND	WARKWORTH DC	710
03:HAMILTON	HAMILTON DC	10,700
03:HAMILTON	HUNTLY DC	1,201
03:HAMILTON	MORRINSVILLE DC	1,314
03:HAMILTON	TE AWAMUTU DC	706
03:HAMILTON	TE KUITI DC	614
03:HAMILTON	TOKOROA DC	1,998
04:TAURANGA	TAURANGA DC	9,735
04:TAURANGA	WAIHI DC	2,278
04:TAURANGA	WHAKATANE DC	2,888
05:ROTORUA	OPOTIKI DC	755
05:ROTORUA	ROTORUA DC	7,240
06:TAUPO	TAUPO DC	3,321
07:GISBORNE	GISBORNE DC	4,450
07:GISBORNE	RUATORIA DC	252
07:GISBORNE	WAIROA DC	631
08:NAPIER	HASTINGS DC	4,781
08:NAPIER	NAPIER DC	5,171
08:NAPIER	WAIPIKURAU DC	468
09:NEW PLYMOUTH	HAWERA DC	2,088
09:NEW PLYMOUTH	NEW PLYMOUTH DC	4,940
10:WANGANUI	MARTON DC	579
10:WANGANUI	TAIHAPE DC	565
10:WANGANUI	TAUMARANUI DC	676
10:WANGANUI	WANGANUI DC	3,376
11:PALMERSTN NTH	DANNEVIRKE DC	651
11:PALMERSTN NTH	FEILDING DC	906
11:PALMERSTN NTH	PALMERSTN NTH DC	4,959
12:WELLINGTON	CHATHAM IS. DC	44
12:WELLINGTON	LEVIN DC	1,923
12:WELLINGTON	LOWER HUTT DC	5,320
12:WELLINGTON	MASTERTON DC	3,001
12:WELLINGTON	PORIRUA DC	4,545
12:WELLINGTON	UPPER HUTT DC	2,191
12:WELLINGTON	WELLINGTON DC	7,372
13:NELSON	BLENHEIM DC	2,550
13:NELSON	NELSON DC	5,097
14:CHCH/WESTLND	CHRISTCHURCH DC	17,079
14:CHCH/WESTLND	GREYMOOUTH DC	1,072
14:CHCH/WESTLND	KAIKOURA DC	126
14:CHCH/WESTLND	RANGIORA DC	1,259
14:CHCH/WESTLND	WESTPORT DC	301
14:CHCH/WESTLND	WHATAROA DC	56
15:TIMARU	ASHBURTON DC	915
15:TIMARU	TIMARU DC	2,313
16:DUNEDIN	ALEXANDRA DC	1,020
16:DUNEDIN	BALCLUTHA DC	589
16:DUNEDIN	DUNEDIN DC	6,761
16:DUNEDIN	OAMARU DC	1,030
17:SOUTHLAND	GORE DC	1,143
17:SOUTHLAND	INVERCARGILL DC	4,944
17:SOUTHLAND	QUEENSTOWN DC	1,187
TOTAL NEW ZEALAND		226,918

DRAFT

Appendix 2:

% Imprisoned by District Court Region for Different Offence Types

Offence Type	Whangarei	Auckland	Hamilton	Tauranga	Rotorua	Taupo	Gisborne	Napier
02:MANSLAUGHTER	100%	0%	100%	0%	0%	0%	0%	0%
03:ATTPT MURDER	0%	0%	0%	0%	0%	0%	0%	0%
04:KIDNAP/ABDUCT	100%	78%	83%	100%	100%	0%	100%	0%
05:RAPE	100%	98%	100%	100%	100%	0%	100%	100%
06:UNLAW SEX CON	100%	94%	100%	94%	90%	0%	100%	92%
07:ATT SEX VIOLN	0%	100%	100%	100%	67%	0%	100%	0%
08:INDEC ASSAULT	59%	49%	74%	47%	44%	0%	56%	53%
09:AGGR BURGLARY	100%	81%	78%	89%	100%	0%	83%	100%
10:AGGR ROBBERY	89%	90%	91%	88%	96%	0%	75%	100%
11:ROBBERY	81%	67%	55%	82%	70%	50%	100%	68%
12:GRIEVOUS ASLT	43%	42%	56%	50%	43%	26%	56%	66%
13:SERIOUS ASLT	15%	11%	15%	15%	15%	18%	16%	19%
14:MALE ASS FEM	12%	10%	18%	19%	18%	5%	20%	23%
15:ASSAULT CHILD	21%	10%	18%	21%	17%	33%	8%	39%
16:MINOR ASSAULT	2%	3%	7%	3%	1%	5%	4%	5%
17:THREAT KILL/G	20%	20%	33%	28%	31%	29%	33%	22%
18:CRUELTY CHILD	40%	60%	50%	100%	0%	0%	0%	100%
19:OTHR VIOLENCE	100%	55%	43%	40%	75%	0%	0%	67%
21:OTHER SEXUAL	25%	33%	26%	38%	17%	0%	40%	56%
22:RESIST/OBSTR	1%	1%	1%	1%	2%	0%	7%	1%
23:THREAT/INTIM	0%	1%	4%	5%	5%	10%	13%	11%
24:OTH AG PERSON	8%	13%	9%	22%	0%	0%	18%	6%
25:BURGLARY	35%	41%	50%	45%	47%	44%	37%	53%
26:THEFT	5%	4%	7%	3%	6%	5%	4%	8%
27:RECEIVING	13%	18%	18%	12%	16%	23%	14%	18%
28:CONVERSION	22%	27%	33%	26%	30%	30%	13%	36%
29:FRAUD ETC	18%	23%	12%	19%	18%	9%	21%	24%
30:ARSON	63%	37%	48%	53%	67%	0%	25%	50%
31:WILFUL DAMAGE	3%	1%	2%	1%	1%	1%	2%	1%
32:OTH PROPERTY	10%	10%	12%	12%	16%	17%	15%	15%
33:USE CANNABIS	1%	0%	5%	2%	2%	4%	0%	2%
34:CANNABIS-DEAL	23%	16%	28%	31%	37%	11%	23%	30%
35:OTHER CANNBIS	4%	1%	3%	4%	5%	3%	14%	3%
36:USE OTH DRUG	6%	5%	22%	18%	0%	0%	50%	9%
37:OTH DRUG-DEAL	88%	78%	83%	73%	100%	0%	50%	100%
38:OTH OTH DRUG	28%	17%	25%	31%	19%	22%	0%	27%
39:BREACH P.D	0%	1%	0%	0%	0%	0%	0%	0%
40:BRCH PROB/SUP	0%	2%	7%	0%	3%	0%	5%	9%
41:BREACH PAROLE	3%	8%	17%	23%	8%	10%	15%	24%

DRAFT

% Imprisoned by District Court Region for Different Offence Types ctd.

Offence Type	New Plymouth	Wanganui	Palm Nth	Wellington	Nelson	Chch/W'land	Timaru	Dunedin	Southland
02:MANSLAUGHTER	0%	0%	0%	0%	0%	0%	0%	0%	0%
03:ATTPT MURDER	0%	0%	0%	0%	0%	100%	0%	0%	0%
04:KIDNAP/ABDUCT	100%	0%	50%	75%	100%	100%	0%	100%	0%
05:RAPE	100%	100%	100%	100%	75%	100%	100%	100%	100%
06:UNLAW SEX CON	100%	50%	100%	100%	86%	95%	0%	83%	100%
07:ATT SEX VIOLN	100%	0%	100%	100%	100%	100%	0%	0%	100%
08:INDEC ASSAULT	48%	60%	53%	48%	48%	62%	0%	43%	30%
09:AGGR BURGLARY	100%	0%	100%	88%	100%	93%	67%	83%	80%
10:AGGR ROBBERY	100%	70%	100%	96%	100%	97%	100%	89%	75%
11:ROBBERY	83%	83%	73%	66%	44%	71%	100%	40%	100%
12:GRIEVOUS ASLT	44%	51%	74%	37%	52%	57%	62%	50%	49%
13:SERIOUS ASLT	14%	21%	19%	7%	7%	16%	18%	10%	13%
14:MALE ASS FEM	14%	21%	31%	9%	14%	20%	16%	13%	13%
15:ASSAULT CHILD	13%	44%	19%	7%	0%	10%	0%	6%	0%
16:MINOR ASSAULT	3%	4%	5%	3%	3%	4%	0%	4%	4%
17:THREAT KILL/G	26%	17%	38%	26%	27%	22%	20%	12%	17%
18:CRUELTY CHILD	0%	0%	0%	0%	0%	0%	0%	0%	0%
19:OTHR VIOLENCE	20%	100%	67%	17%	60%	44%	100%	33%	0%
21:OTHER SEXUAL	29%	43%	44%	19%	50%	38%	29%	46%	19%
22:RESIST/OBSTR	0%	2%	0%	1%	0%	3%	0%	0%	0%
23:THREAT/INTIM	5%	14%	3%	2%	5%	2%	0%	7%	0%
24:OTH AG PERSON	0%	20%	0%	2%	5%	4%	0%	11%	17%
25:BURGLARY	47%	49%	48%	38%	37%	52%	40%	42%	38%
26:THEFT	8%	9%	8%	4%	7%	12%	5%	9%	6%
27:RECEIVING	20%	22%	20%	7%	16%	23%	9%	12%	12%
28:CONVERSION	32%	35%	47%	15%	16%	33%	29%	29%	23%
29:FRAUD ETC	21%	24%	19%	19%	12%	25%	7%	17%	14%
30:ARSON	67%	25%	67%	56%	29%	56%	29%	46%	67%
31:WILFUL DAMAGE	5%	1%	1%	1%	1%	2%	1%	0%	1%
32:OTH PROPERTY	9%	18%	22%	8%	3%	15%	5%	10%	13%
33:USE CANNABIS	0%	3%	2%	2%	1%	2%	2%	1%	1%
34:CANNABIS-DEAL	27%	33%	32%	19%	15%	19%	11%	14%	20%
35:OTHER CANNBIS	3%	3%	5%	1%	1%	3%	0%	0%	2%
36:USE OTH DRUG	0%	50%	0%	8%	7%	6%	11%	0%	11%
37:OTH DRUG-DEAL	100%	100%	50%	58%	67%	62%	0%	22%	27%
38:OTH OTH DRUG	24%	22%	45%	10%	14%	33%	0%	6%	0%
39:BREACH P.D	0%	0%	0%	11%	0%	14%	0%	0%	0%
40:BRCH PROB/SUP	0%	3%	6%	3%	0%	6%	0%	9%	11%
41:BREACH PAROLE	16%	25%	15%	4%	6%	24%	13%	13%	12%

DRAFT

% Imprisoned by District Court Region for Different Offence Types ctd.

Offence Type	Whangarei	Auckland	Hamilton	Tauranga	Rotorua	Taupo	Gisborne	Napier
42:BR COMM WORK	6%	5%	9%	9%	9%	12%	16%	24%
43:BREACH BAIL	0%	2%	4%	4%	0%	0%	2%	5%
44:NON MLST/PROT	20%	10%	14%	19%	12%	10%	8%	26%
45:ESCAPE CUSTDY	13%	39%	18%	39%	26%	30%	20%	63%
46:OBSTR JUSTICE	56%	42%	36%	71%	50%	0%	56%	43%
47:OT AG JUSTICE	9%	2%	9%	10%	15%	6%	0%	4%
48:RIOT	0%	100%	0%	50%	0%	0%	100%	0%
49:UNLAWFL ASSBLY	50%	6%	0%	0%	0%	0%	14%	0%
50:POSS OFF. WEAP	10%	6%	9%	13%	4%	13%	19%	11%
52:LANGUAGE OFF	0%	0%	0%	0%	0%	0%	0%	0%
53:DISORD BEHAVR	0%	0%	0%	0%	0%	0%	0%	0%
54:TRESPASSING	3%	2%	3%	4%	2%	2%	6%	4%
55:OT GOOD ORDER	0%	4%	0%	8%	0%	0%	0%	0%
57:DRV CS DTH/IN	11%	7%	7%	16%	16%	10%	11%	17%
58:DRIVE UND INF	6%	2%	5%	7%	9%	3%	5%	14%
59:DRIVE WH DISQ	18%	11%	18%	18%	14%	8%	13%	23%
60:RECKLESS/DANG	4%	2%	2%	3%	0%	0%	3%	5%
61:CARELESS DRIV	0%	0%	0%	0%	0%	0%	0%	0%
62:OTHER TRAFFIC	0%	0%	0%	0%	0%	0%	0%	0%
63:ARMS ACT	5%	13%	13%	14%	11%	8%	18%	4%
64:DOG CNTL/HYD	0%	0%	0%	0%	0%	0%	0%	0%
65:TAX ACTS	0%	1%	1%	26%	0%	0%	0%	15%
66:SALE LIQ ACT	0%	0%	0%	0%	0%	0%	0%	0%
67:FISHERIES	0%	0%	0%	0%	0%	0%	0%	0%
69:OTHER MISCELL	7%	7%	6%	3%	3%	0%	3%	1%
Total	9%	7%	10%	9%	10%	5%	9%	14%

DRAFT

% Imprisoned by District Court Region for Different Offence Types ctd.

Offence Type	New Plymouth	Wanganui	Palm Nth	Wellington	Nelson	Chch/W'land	Timaru	Dunedin	Southland
42:BR COMM WORK	17%	13%	7%	4%	8%	15%	15%	10%	14%
43:BREACH BAIL	2%	6%	4%	2%	4%	7%	4%	2%	3%
44:NON MLST/PROT	19%	18%	19%	8%	12%	21%	26%	13%	12%
45:ESCAPE CUSTDY	73%	63%	50%	39%	23%	42%	100%	17%	29%
46:OBSTR JUSTICE	57%	100%	75%	59%	43%	46%	0%	57%	33%
47:OT AG JUSTICE	0%	3%	18%	9%	11%	26%	6%	14%	0%
48:RIOT	0%	0%	0%	0%	0%	0%	0%	0%	0%
49:UNLAWFL ASSBLY	0%	0%	0%	0%	0%	0%	0%	0%	0%
50:POSS OFF. WEAP	6%	12%	5%	5%	5%	15%	11%	10%	5%
52:LANGUAGE OFF	0%	0%	0%	0%	0%	0%	0%	0%	0%
53:DISORD BEHAVR	0%	1%	1%	0%	0%	0%	1%	0%	0%
54:TRESPASSING	1%	7%	3%	2%	1%	4%	4%	4%	3%
55:OT GOOD ORDER	0%	0%	0%	0%	0%	6%	0%	0%	0%
57:DRV CS DTH/IN	6%	14%	6%	7%	6%	8%	9%	9%	2%
58:DRIVE UND INF	8%	11%	7%	3%	5%	7%	6%	7%	5%
59:DRIVE WH DISQ	15%	18%	16%	10%	13%	17%	13%	13%	14%
60:RECKLESS/DANG	4%	3%	1%	1%	1%	4%	1%	2%	2%
61:CARELESS DRIV	0%	0%	0%	0%	0%	0%	0%	0%	0%
62:OTHER TRAFFIC	0%	0%	0%	0%	0%	0%	0%	0%	0%
63:ARMS ACT	6%	13%	17%	13%	9%	15%	9%	3%	11%
64:DOG CNTL/HYD	0%	0%	0%	0%	0%	0%	0%	0%	0%
65:TAX ACTS	6%	0%	13%	3%	8%	2%	0%	4%	0%
66:SALE LIQ ACT	0%	0%	0%	0%	0%	0%	0%	0%	0%
67:FISHERIES	0%	0%	0%	2%	0%	0%	0%	0%	0%
69:OTHER MISCELL	2%	0%	2%	3%	6%	4%	2%	1%	2%
Total	11%	12%	11%	6%	7%	12%	8%	8%	7%

DRAFT

Appendix 3:

% Imprisoned by District Court Region for Sub-Categories of Offence

Offence Code Description	Whangarei	Auckland	Hamilton	Tauranga	Rotorua	Taupo	Gisborne	Napier
THEFT PROPERTY (OVER \$5000)	100%	22%	33%	100%	0%	0%	0%	0%
THEFT PROPERTY (\$500 -\$5000)	0%	14%	14%	0%	0%	0%	0%	0%
THEFT PROPERTY (UNDER \$500)	3%	3%	3%	1%	4%	0%	0%	5%
RECEIVES PROPERTY (UNDER \$500)	9%	7%	9%	5%	13%	6%	14%	11%
RECEIVES PROPERTY (OVER \$1000)	14%	20%	26%	7%	21%	44%	19%	26%
RECEIVES PROPERTY (\$500-\$1000)	7%	20%	19%	23%	20%	0%	0%	15%
DRIVING WITH EXCESS BLOOD ALCOHOL CONTENT	0%	0%	0%	0%	1%	0%	1%	2%
DROVE WITH EXCS BLOOD ALCOHOL-3RD OR SUBS	24%	10%	32%	36%	34%	21%	21%	47%
BREATH ALCL LVL EXC 400 MGMS-LITRE OF BTH	0%	0%	0%	0%	1%	0%	1%	1%
DROVE WITH EXS BREATH ALCOHOL-3RD / SUB	23%	13%	21%	33%	31%	17%	17%	51%
DRIVING WHILE DISQUALIFIED	2%	1%	1%	2%	1%	0%	2%	2%
DROVE WHILE DISQUALIFIED - 3RD OR SUB	40%	30%	42%	42%	31%	23%	25%	52%

Offence Code Description	New Plymouth	Wanganui	Palm Nth	Wellington	Nelson	Chch/W'land	Timaru	Dunedin	Southland
THEFT PROPERTY (OVER \$5000)	0%	50%	100%	22%	0%	50%	0%	0%	0%
THEFT PROPERTY (\$500 -\$5000)	0%	50%	0%	21%	0%	27%	0%	0%	33%
THEFT PROPERTY (UNDER \$500)	8%	5%	3%	3%	5%	10%	1%	2%	5%
RECEIVES PROPERTY (UNDER \$500)	17%	4%	7%	5%	19%	10%	11%	14%	13%
RECEIVES PROPERTY (OVER \$1000)	23%	33%	18%	9%	21%	33%	0%	13%	15%
RECEIVES PROPERTY (\$500-\$1000)	23%	15%	33%	7%	0%	26%	0%	0%	7%
DRIVING WITH EXCESS BLOOD ALCOHOL CONTENT	0%	1%	3%	0%	1%	1%	0%	1%	1%
DROVE WITH EXCS BLOOD ALCOHOL-3RD OR SUBS	28%	52%	21%	15%	29%	33%	11%	34%	25%
BREATH ALCL LVL EXC 400 MGMS-LITRE OF BTH	1%	1%	0%	0%	0%	1%	1%	0%	1%
DROVE WITH EXS BREATH ALCOHOL-3RD / SUB	30%	38%	34%	11%	23%	33%	26%	34%	21%
DRIVING WHILE DISQUALIFIED	2%	2%	1%	1%	1%	2%	1%	1%	2%
DROVE WHILE DISQUALIFIED - 3RD OR SUB	38%	47%	48%	25%	34%	40%	34%	36%	33%